

Zinnia flower



- Tips to get started:
1. Call a friend over
 2. Make some tea/coffee
 3. Get out the art supplies
 4. Have fun!

By Erna & Alana

Have fun making art with us and tag us on
instagram and facebook using the #ArtWithErnaAndAlana



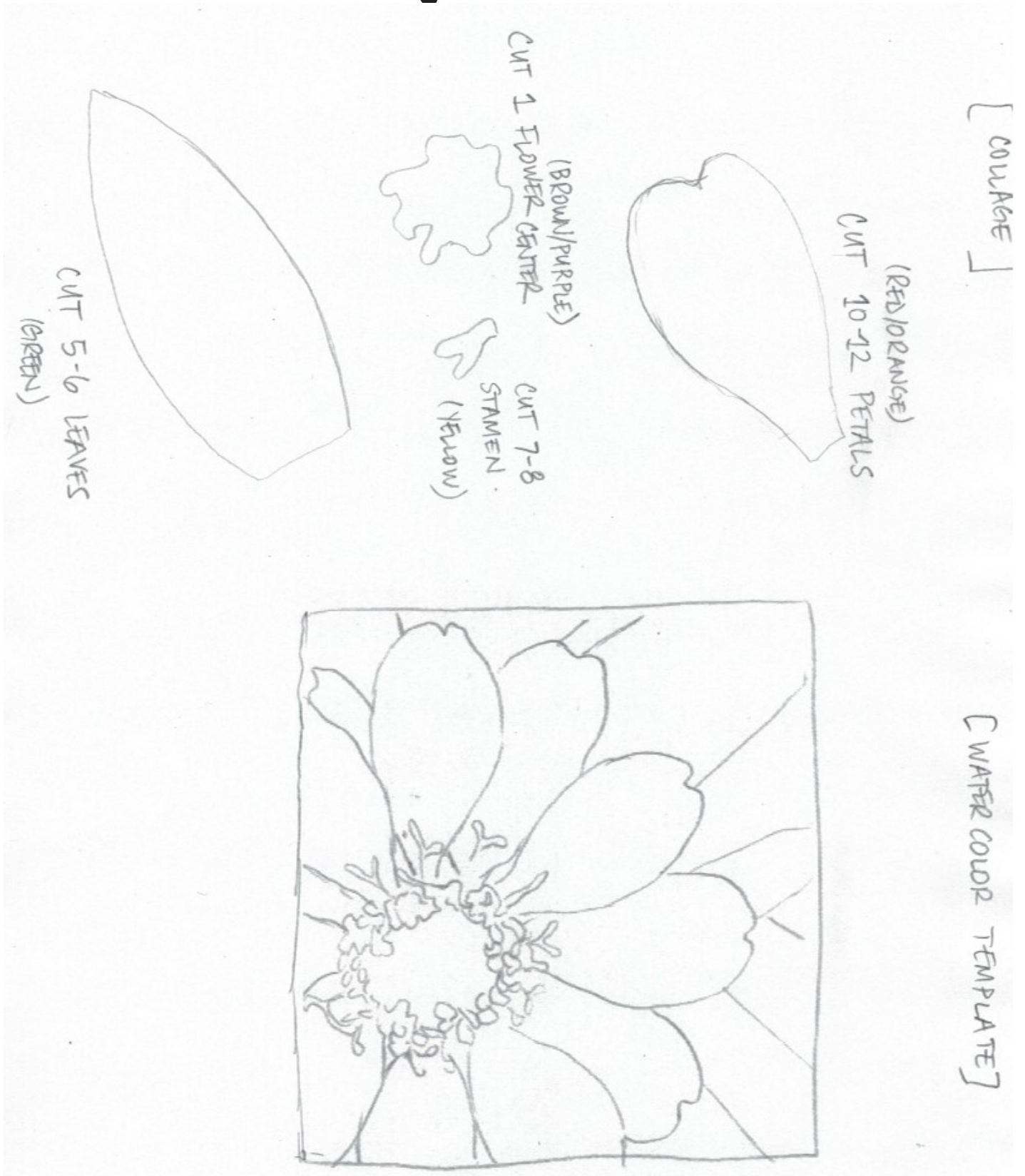
- @ernavandyk
- @ofloveandlightcreative



- @ernavandyk-Artist and
- Private Facebook Group: Art with Erna
- @ofloveandlightcreative

Zinnia flower

Template



- @ernavandyk
- @ofloveandlightcreative

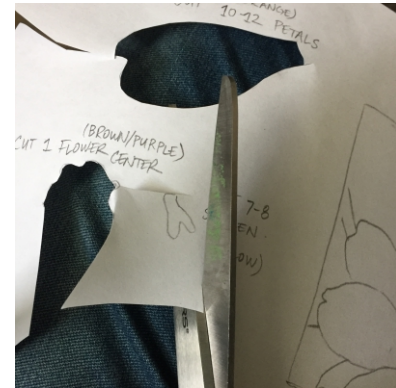


- @ernavandyk-Artist and
- Private Facebook Group: Art with Erna
- @ofloveandlightcreative

Zinnia flower

Step by Step Sheet
for the Collage Project

1



- 1
- What you'll need:
- *scissors and/or X-Acto knife
 - *glue (I used tacky glue.)
 - *colored paper: red, green, brown, yellow (I used card stock that had been prepped with tempera paint. You can also prep any type of paper, such as copy paper, with an acrylic or watercolor. Collage or colored paper could be used instead,
 - *this week's template
 - *6x6 inch square piece of paper, you want it thick enough to hold the glue and other paper.)

- 2
- Cut out your template. This template provided will work for a 6x6 inch piece. If you'd like to make it smaller or larger, adjust print size accordingly. (For a 4x4, print at 65%; for a 12x12, print at 200%.)



- 3
- Using the template, cut leaves and petals. Look for slight variation in tone, so cut some darker and some lighter areas. I advise cutting along the sides of the paper to reduce waste. You may also wish to cut several rectangles just larger than the template, then use your scissors to cut 3-4 at a time. Don't worry about perfectly following the template. It is there to guide you, not to rule you.

- 4
- Cut the stamen, using the template, or freehand as smushed hearts. Cut a few small triangles of dark green or brown to fill in white spaces as you lay out your flower.



- @ernavandyk
- @ofloveandlightcreative



- @ernavandyk-Artist and
- Private Facebook Group: Art with Erna
- @ofloveandlightcreative

Zinnia flower

Step by Step Sheet
for the Collage Project

2



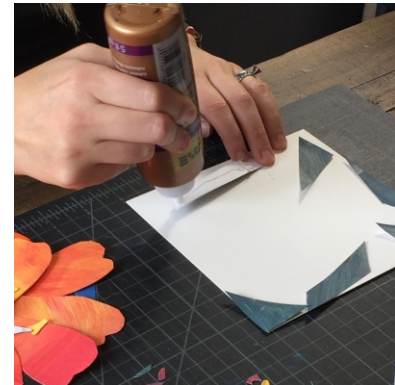
5
Refer to the original photo, and begin to lay out your leaves, working along two of the outer edges of your paper. Don't glue them down yet. This is to arrange them, and to train your brain to look at the shape and the scale before you commit. Notice where there is white space between the leaves. You'll want to fill that in with darker collage material. Your leaves should go off the page of the square, just as the ones in the photo inspiration do. You will trim them later.



6
Once you have laid out the leaves, lay out the rest of your flower, working from back to front. After the leaves, set out the petals, then the center of the flower, then the stamen on top. Whatever is closest to your eye in the photo is the last thing you will set on the page. Again, allow the petals to go off the page. The petals will be used in a full circular pattern.



7
After you have finished arranging the entire composition, take a reference photo, then gently slide the collage off the base paper to the side. Don't worry if it separates. You have your reference photo if you need to look back at it, and you have trained your brain and hands to know what to do.



8
Begin by gluing dark green or brown strips of paper along the sides of the paper, where white would show through the leaves. This is to give the effect of dark shadow or ground, as you see in the original inspiration photo. I find it best to use a cotton swab or your finger to apply and spread the glue to the back of the collage paper. Tip: place a paper bag under your project to avoid getting glue on your furniture.



- @ernavandyk
- @ofloveandlightcreative



- @ernavandyk-Artist and
- Private Facebook Group: Art with Erna
- @ofloveandlightcreative

Zinnia flower

Step by Step Sheet
for the Collage Project

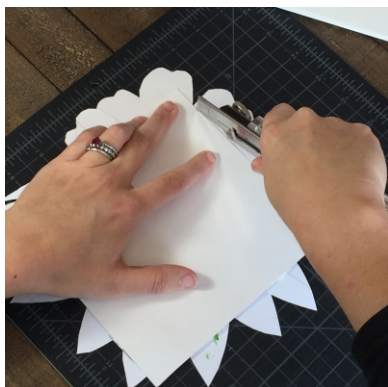
3



9
Glue down the leaves in a semi-circular pattern. You can fan them out, or vary the order in which you glue them down to mimic the way leaves grow. I recommend at this point putting glue on the background first, or mark on your leaves and petals where they will touch other paper, and just apply the glue there. If using card stock, you will need to press down on your collage materials pretty hard to get them to stick nicely without buckling.



10
Glue down your final little bits and pieces, covering up any white paper that tries to peek through. Your collage will extend beyond the original square.



11
Flip the flower over, and using scissors or an X-Acto knife or box cutter, trim the excess collage paper down. Use the original paper square as a guide.



12
Turn it right side up, and VOILA! You have a beautiful collage close-up of a flower! Don't be afraid to play with different color combinations, or petal and leaf shapes, to make it your own.



- @ernavandyk
- @ofloveandlightcreative



- @ernavandyk-Artist and
- Private Facebook Group: Art with Erna
- @ofloveandlightcreative

Zinnia flower

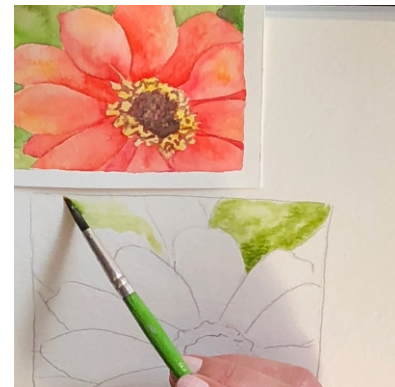
Step by Step Sheet
for the Watercolor Project

1



- 1
What you'll need:
- *watercolor paper
 - *assorted watercolors, I use ShinHan tube watercolors
 - *watercolor palette
 - *8 Round paint brush
 - *water cup (to rinse brush and activate watercolor)
 - *washcloth or paper towel
 - *template
 - *pencil

- 2
Turn the template over so that you see only the blank side of the paper. With your pencil, rub the lead across the back of the page. You are essentially creating a DIY carbon paper.



- 3
Flip the template back to right side up, and determine how you'd like to orient the picture and where you'd like to paint it on your journal page. Tape it down, and trace over the lines of the template. Once you are satisfied that you transferred all of the lines, remove the template and set it nearby for reference, as needed.

- 4
Start with a base layer of your green. Fill in your first leaf with a light wash of water, then pick up a bit of green, and move it around the leaf. The paint will go wherever the water goes, so use the tip of your brush to instruct the color where to go. Once you have finished your first leaf, continue one leaf at a time, hopping around the page, so that the green has time to dry before you put new paint next to it.



- @ernavandyk
- @ofloveandlightcreative



- @ernavandyk-Artist and
- Private Facebook Group: Art with Erna
- @ofloveandlightcreative

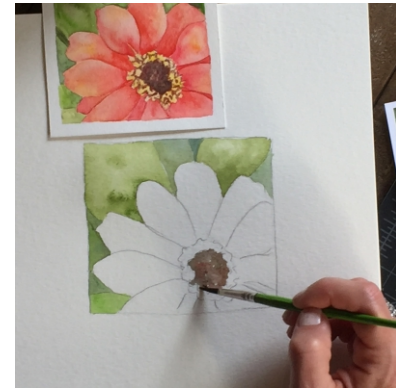
Zinnia flower

Step by Step Sheet
for the Watercolor Project

2



5
Fill in each section of green. As you do, realize this is your base layer. You'll come back to add shading to leaves and petals later. Notice the variance in color on the page. That is done by adding more or less pigment, and by mixing a little bit of yellow or blue into the green for richness color. When you are finished with the leaves, rinse the green out of your brush and pat dry until no color runs out.



6
Next, move on to the center of the flower. Mix a bit of purple into your brown to get a nice warm color, in order to paint your first base layer. To do this, I use a "touchy touchy" method. For this part of the flower, do not put water down first. Instead, dip your brush in the water, pick up the brownish-purple mix, and dot, dot, dot on the center of the flower. This is similar to a pointillism technique, but with much larger dots. It is okay for the color to overlap itself a bit. That will give it depth. Rinse your brush well when you are done.



7
Before moving on to the petals, check to make sure your green leaves are dry. If they are not, and you start the petals, they will run together to make mud. If the paper is still wet, but not puddling, you can use a hairdryer or heat gun to dry it faster. If it is still very wet, wait to dry it or you will move the water around with the air.



8
Begin to fill in your petals. Fill in your first petal with a light water wash, then drop in orange paint with a touch of yellow color, and spread it around the petal lightly with your brush to fill the space with color. Similar to the leaves, this is your first base color. You will want to drop primarily orange into the petal, but you can also drop yellow directly into the light water wash, and push the colors into one another.



- @ernavandyk
- @ofloveandlightcreative



- @ernavandyk-Artist and
- Private Facebook Group: Art with Erna
- @ofloveandlightcreative

Zinnia flower

Step by Step Sheet
for the Watercolor Project

3



9
Continue filling in the petals, skipping around the page to give each petal time to dry before you paint the one next to it. The paper should soak up the water relatively quickly, so by the time you've hopped around the page and you're returning to a petal adjacent to a painted one, it should be dry enough.



10
Add shading. For your petals, pick up the red color with your brush, and paint a line along the edge of the petal, pointing the tip of the brush toward the edge of the petal. Dip your brush in the water, and go back over the line in a light, circular "smudgy, smudgy" technique, drawing the color down onto the petal. This will avoid a hard-edged line, and make the shading look more natural. Once you have finished the petals, repeat the process with the leaves, using green rather than red. I like to mix a little bit of purple into my shading colors, to give it a darker, richer color.



11
Clean your brush, and pick up a bit of yellow by dipping it into the water, then into the color. Paint the area around the center of the flower yellow.



12
Last step! Pick up some of that brownish purple from the center of your flower. First, draw some squiggly lines with the paint over the yellow, using the tip of your brush. Allow the lines to look organic by wiggling your hand. Then return to the center of the flower, and tap, tap, tap the color into the center to add depth and shading to your flower. And VOILA! You're done!



- @ernavandyk
- @ofloveandlightcreative



- @ernavandyk-Artist and
- Private Facebook Group: Art with Erna
- @ofloveandlightcreative